

CERTIFICATE OF LOCATION OF GOVERNMENT CORNER

Northeast Corner of Section 31, Township 108, Range 41, 5th P.M.

STATE OF MINNESOTA, County of Murray

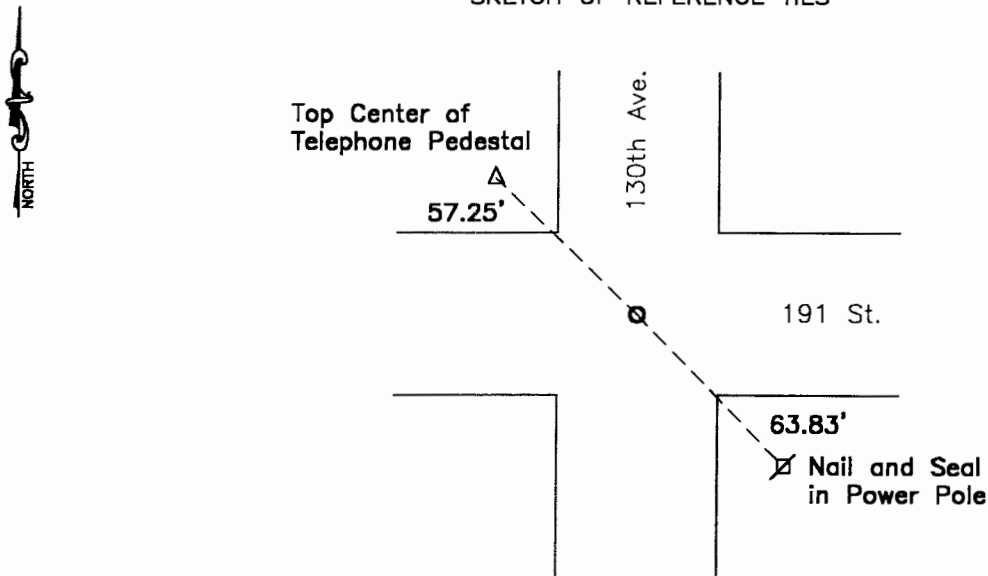
At the corner location shown on the sketch:

On April 5, 2006 found a PK Nail from the County Ties.
DATE

left monument as found, lowered monument, removed monument (explain)

On _____ placed a _____
DATE

SKETCH OF REFERENCE TIES



Minnesota State Plane Coordinate System Murray County Datum NAD83 (1996)
N: 200494.108
E: 490134.326

Statement of evidence relative to this corner location is on back of page.

I hereby certify that this document and the data contained herein was prepared by me or under my direct supervision.

Samuel Bruth June 15, 2006
SIGNATURE DATE

Registration No. 43844

- Land Surveyor, Professional Engineer
- County Surveyor, County Engineer

OFFICE OF THE COUNTY RECORDER
County of _____

I hereby certify that this document was filed in the Co. Recorders office at _____ .M on the _____ day of _____ A.D. 20 ____

County Recorder _____
By _____, Deputy

DOCUMENT NO. _____

Statement of Evidence

In 1972, the Murray County Highway Department found a Field stone at the corner. They set a steel pin in 1972, and in August of 1987 they placed a PK nail on the surface of the road.

On April 5, 2006 Bueltel-Moseng Land Surveying located the PK nail that was set by the Murray County Highway Department using their field ties.